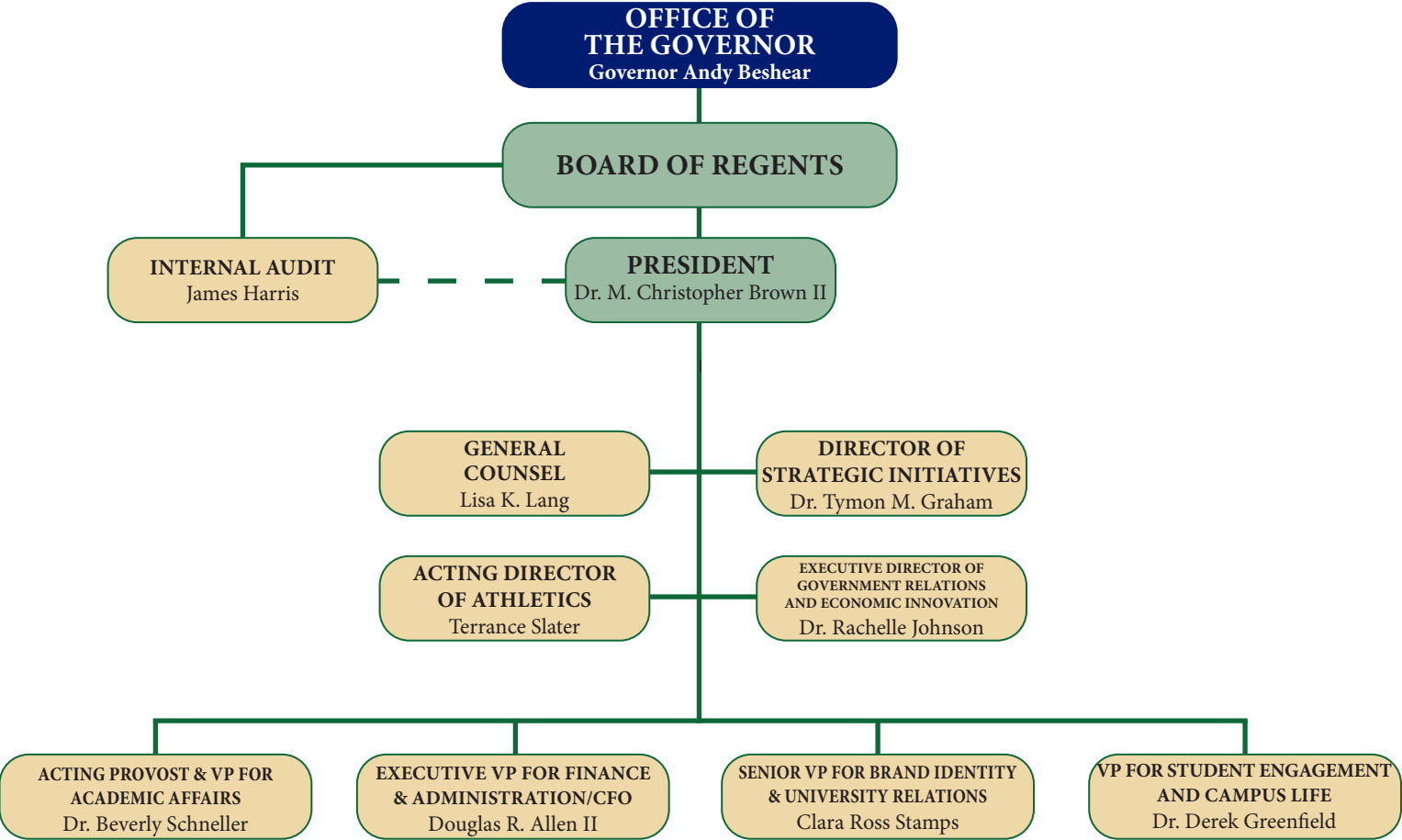
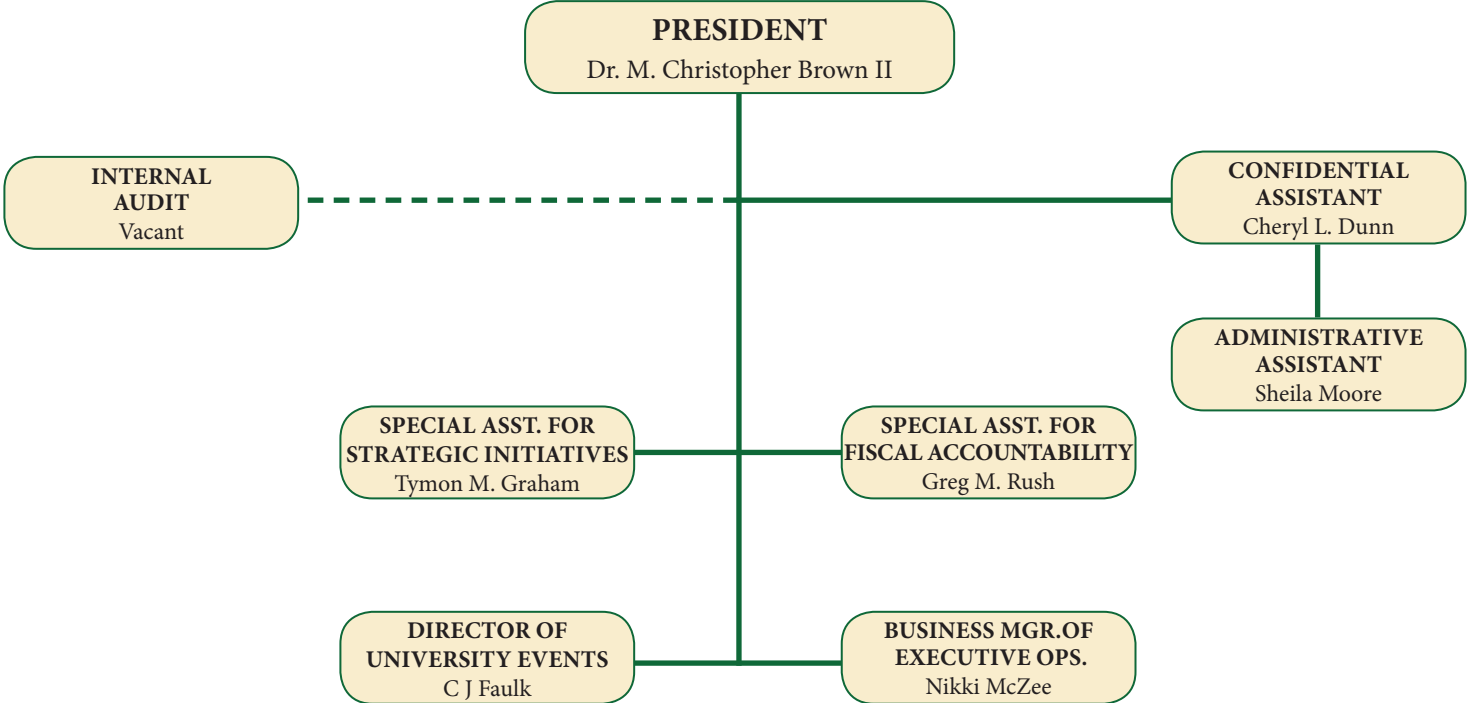


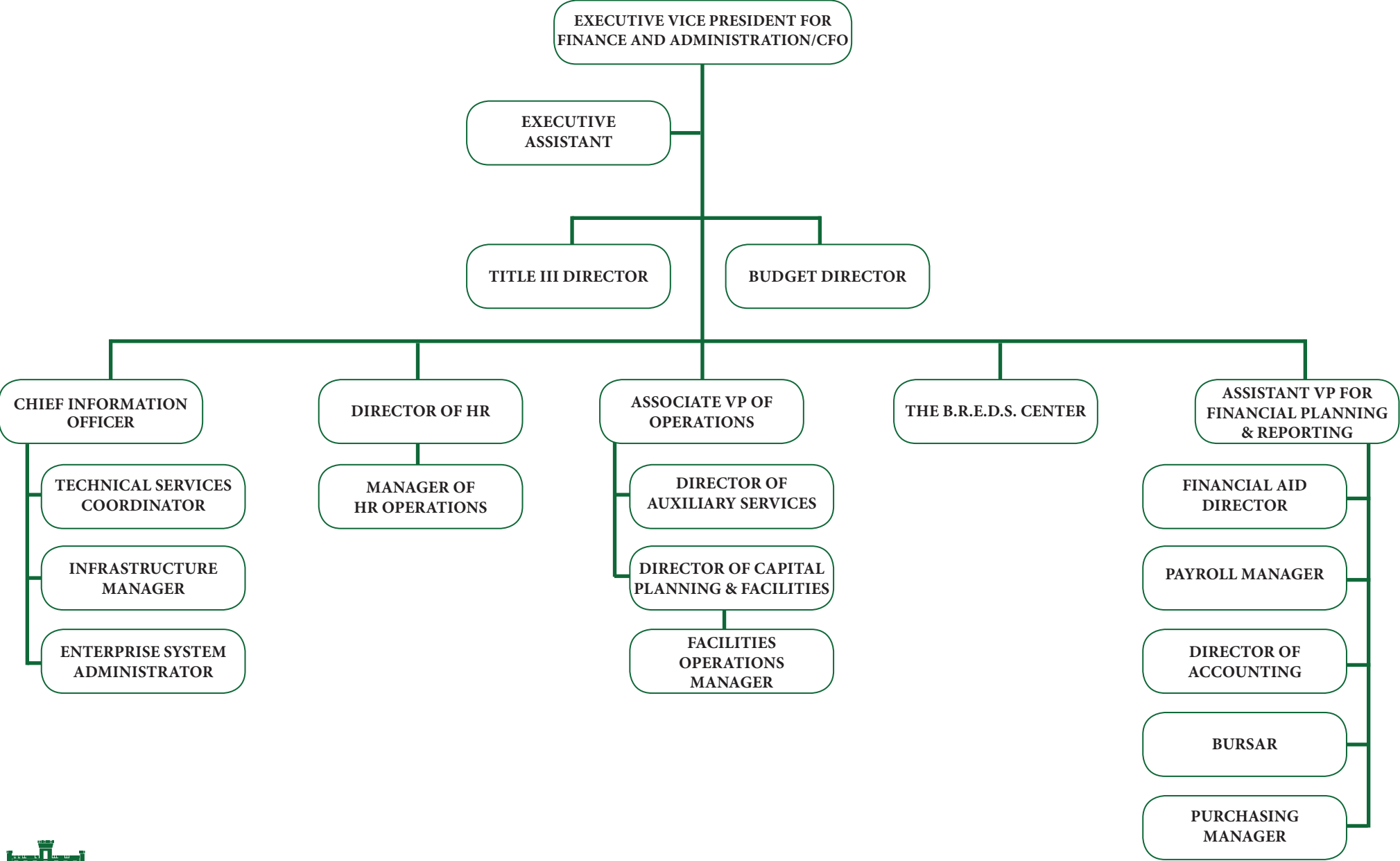
**KENTUCKY STATE UNIVERSITY
SENIOR ADMINISTRATION**



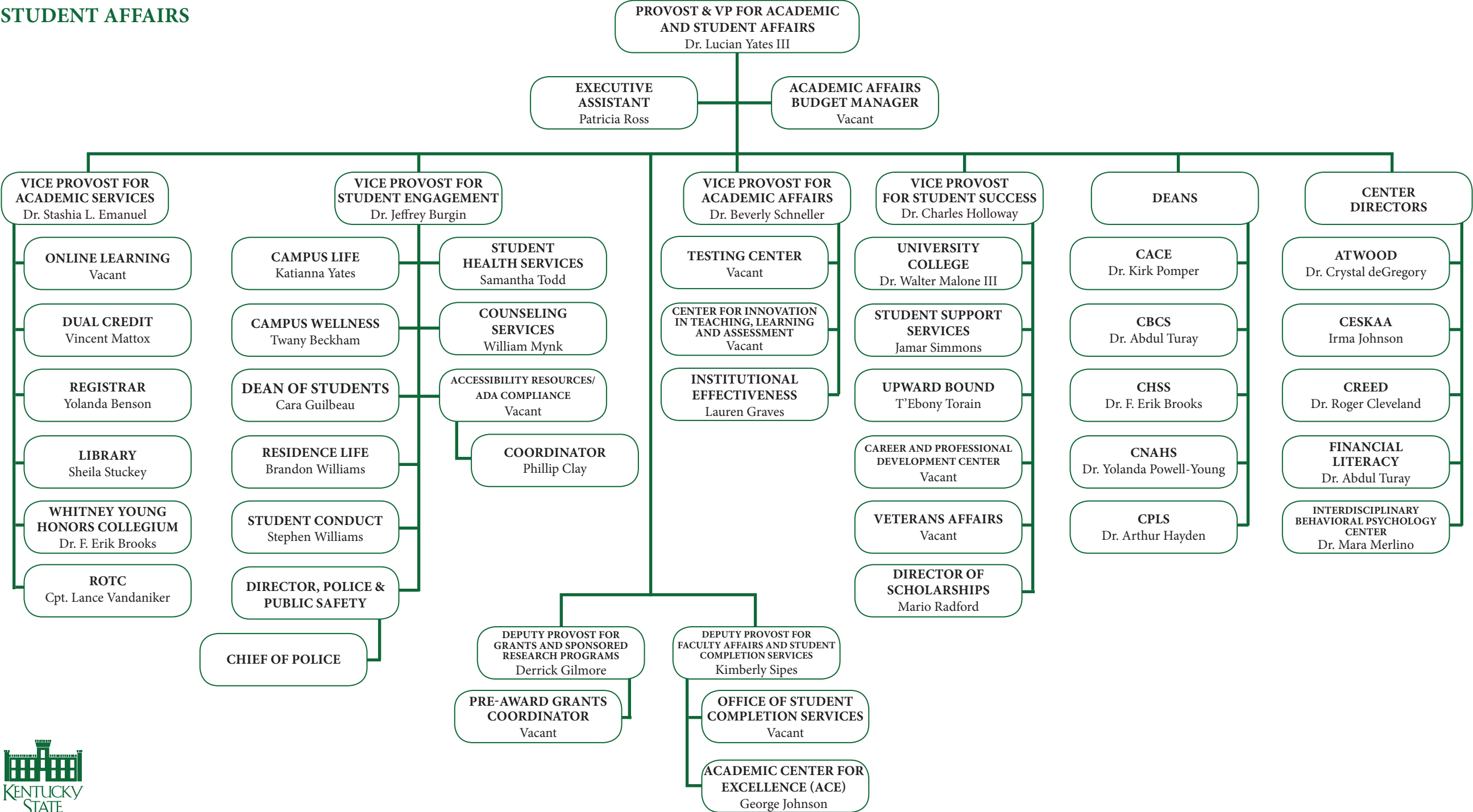
**KENTUCKY STATE UNIVERSITY
OFFICE OF THE PRESIDENT**



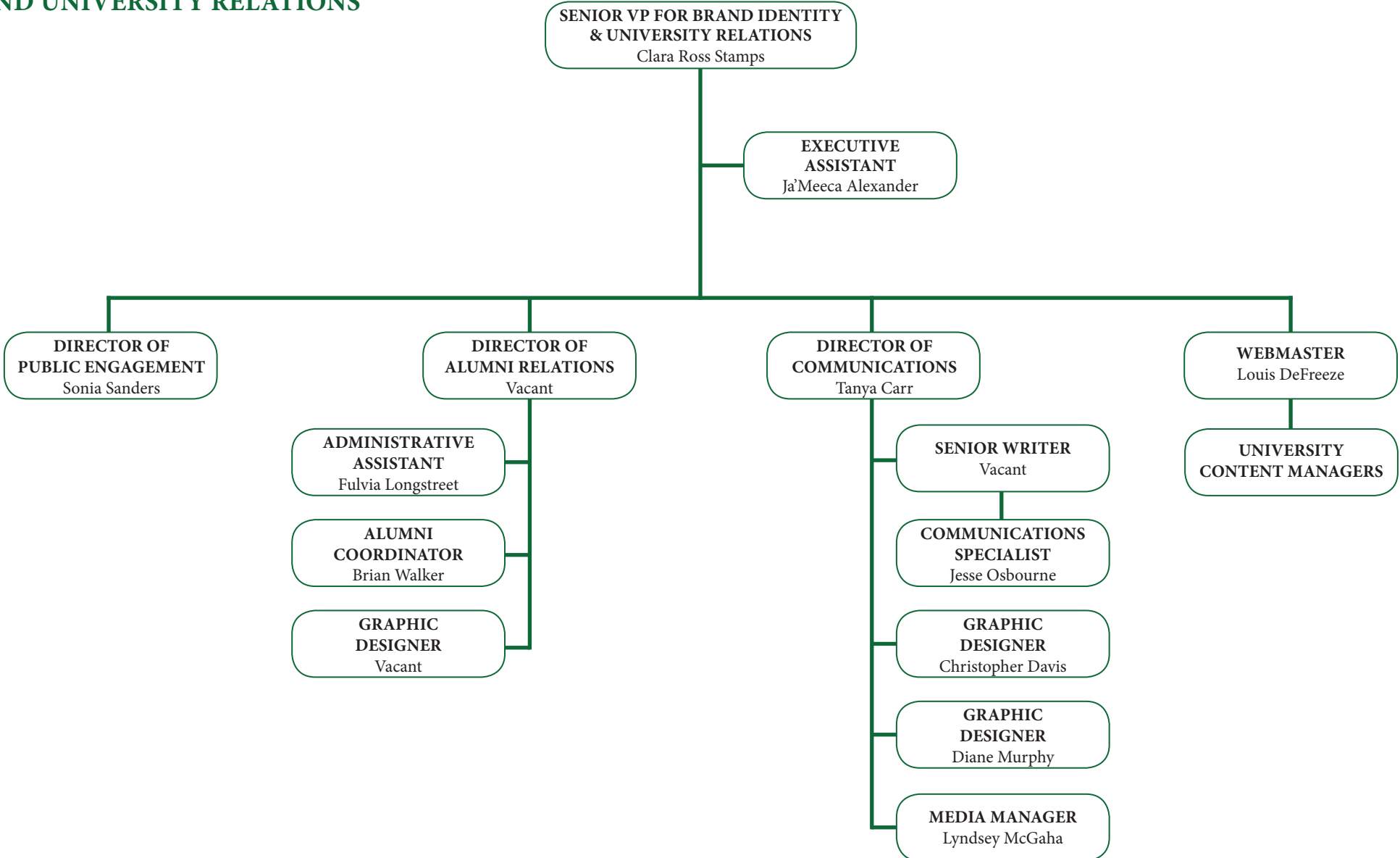
**KENTUCKY STATE UNIVERSITY
DIVISION OF FINANCE
AND ADMINISTRATION**



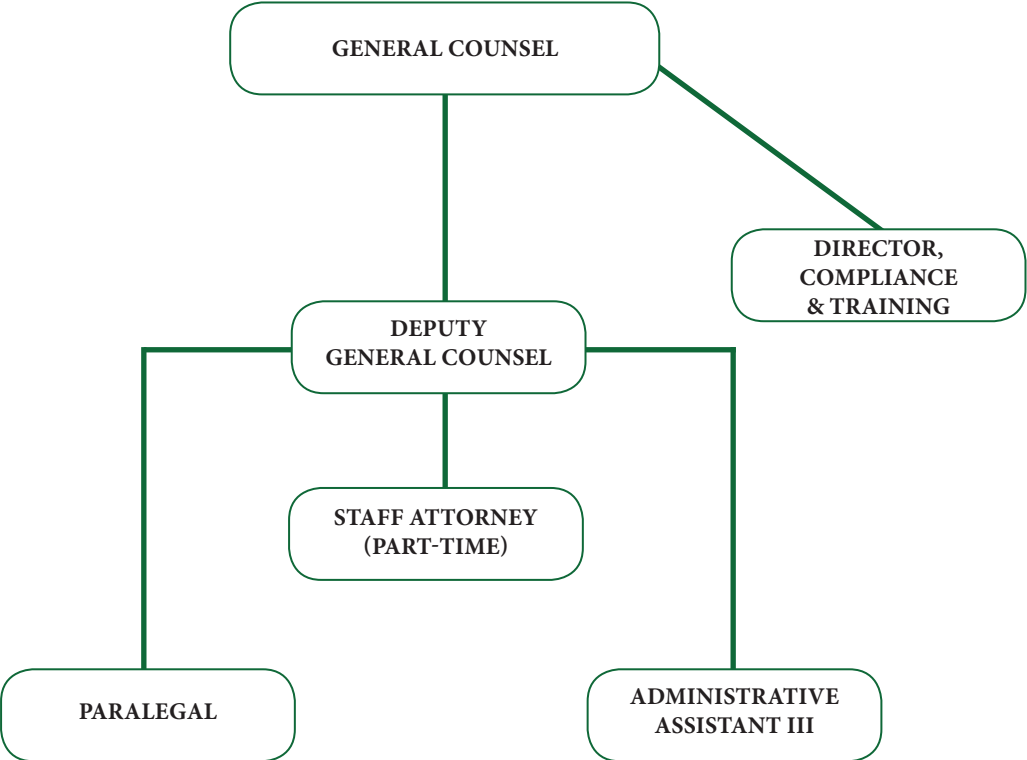
KENTUCKY STATE UNIVERSITY
DIVISION OF ACADEMIC AND
STUDENT AFFAIRS



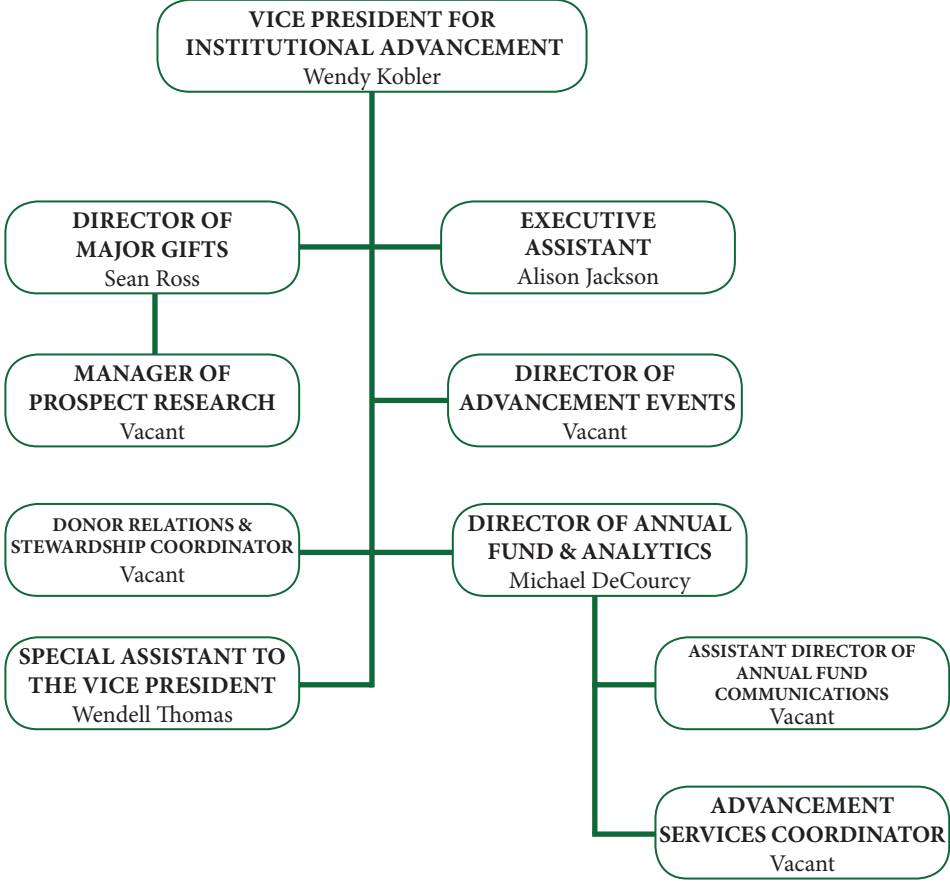
**KENTUCKY STATE UNIVERSITY
DIVISION OF BRAND IDENTITY
AND UNIVERSITY RELATIONS**



**KENTUCKY STATE UNIVERSITY
OFFICE OF THE GENERAL COUNSEL**



KENTUCKY STATE UNIVERSITY
DIVISION OF INSTITUTIONAL ADVANCEMENT



KENTUCKY STATE UNIVERSITY ATHLETICS

