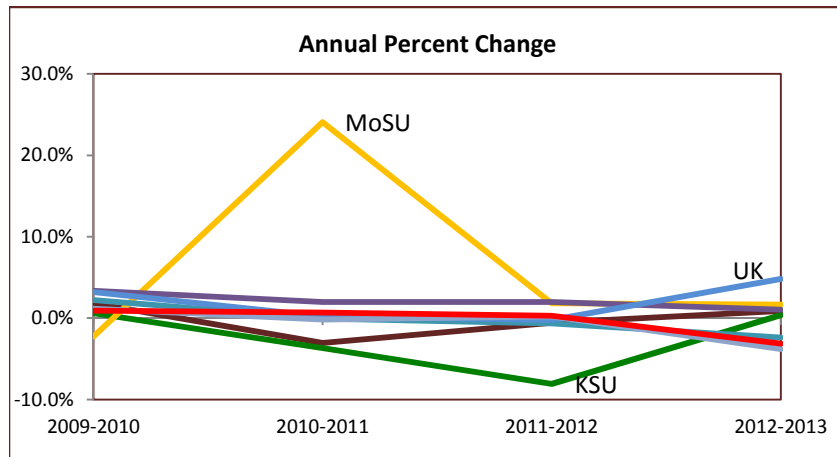


**Total Enrollment**

Level	Fall 2009	Fall 2010	Fall 2011	Fall 2012	Fall 2013	5-Yr Change
Undergraduate	2,638	2,606	2,490	2,296	2,370	-10.2%
Graduate	196	245	256	228	163	-16.8%
<b>Total Enrollment</b>	<b>2,834</b>	<b>2,851</b>	<b>2,746</b>	<b>2,524</b>	<b>2,533</b>	<b>-10.6%</b>

**Five Year Enrollment Growth Among Kentucky Public Institutions**

Institution	Fall 2009	Fall 2010	Fall 2011	Fall 2012	Fall 2013	5-Yr Change
Eastern Kentucky University	16,268	16,567	16,062	15,968	16,111	-1.0%
Kentucky State University	2,834	2,851	2,746	2,524	2,533	-10.6%
Morehead State University	9,046	8,842	10,971	11,172	11,358	25.6%
Murray State University	10,078	10,416	10,623	10,832	10,943	8.6%
Northern Kentucky University	15,405	15,748	15,738	15,634	15,263	-0.9%
University of Kentucky	27,171	28,037	28,094	28,034	29,385	8.1%
University of Louisville	22,031	22,290	22,249	22,293	21,447	-2.7%
Western Kentucky University	20,712	20,903	21,048	21,110	20,448	-1.3%



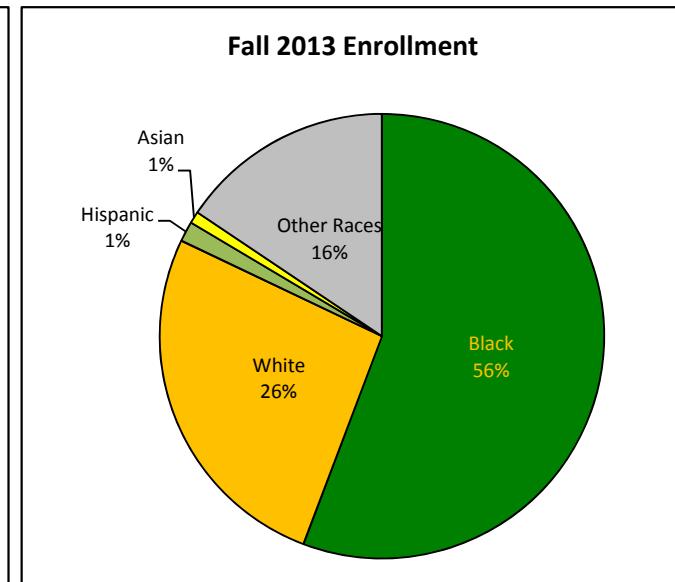
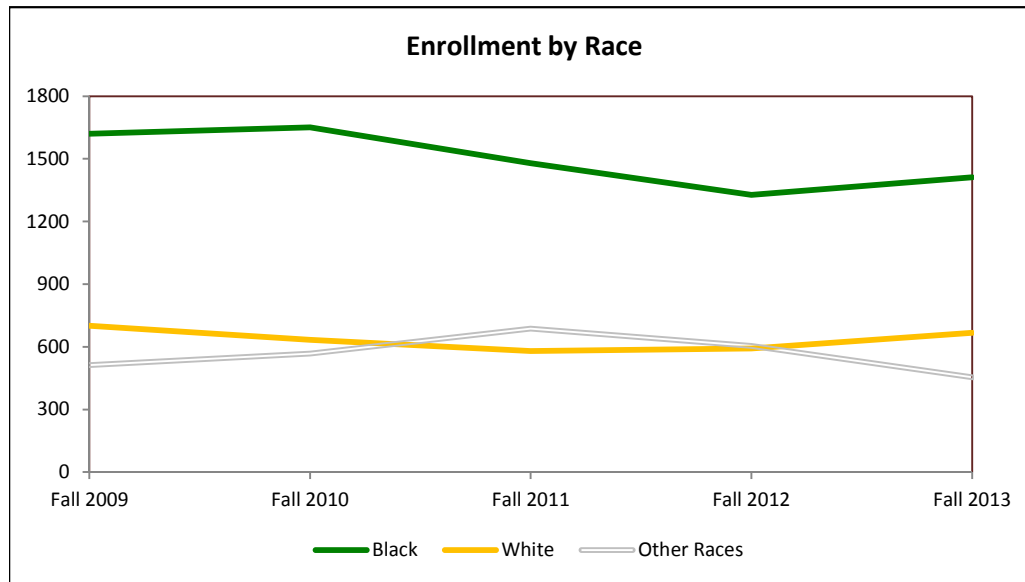
	2009-2010	2010-2011	2011-2012	2012-2013
EKU	1.8%	-3.0%	-0.6%	0.9%
KSU	0.6%	-3.7%	-8.1%	0.4%
MoSU	-2.3%	24.1%	1.8%	1.7%
MuSU	3.4%	2.0%	2.0%	1.0%
NKU	2.2%	-0.1%	-0.7%	-2.4%
UK	3.2%	0.2%	-0.2%	4.8%
UL	1.2%	-0.2%	0.2%	-3.8%
WKU	0.9%	0.7%	0.3%	-3.1%

**Total Enrollment by Gender and Race**

Gender	Race	Fall 2009	Fall 2010	Fall 2011	Fall 2012	Fall 2013	5-Yr Change
Female	Nonresident Alien	20	35	38	40	7	-65.0%
	Black, Non Hispanic	915	959	888	757	826	-9.7%
	American Indian/Alaskan Native	3	2	4	0	3	0.0%
	Asian	8	4	2	7	12	50.0%
	Hispanic	20	16	19	20	23	15.0%
	White, Non Hispanic	437	413	380	371	402	-8.0%
	Unknown	213	229	308	268	187	-12.2%
	Two or More Races	0	24	14	14	30	
	Hawaiian or Pacific Islander	0	0	2	4	3	
<b>Total Female</b>		<b>1,616</b>	<b>1,682</b>	<b>1,655</b>	<b>1,481</b>	<b>1,493</b>	<b>-7.6%</b>
Male	Nonresident Alien	19	28	25	26	6	-68.4%
	Black, Non Hispanic	705	692	591	570	586	-16.9%
	American Indian/Alaskan Native	1	1	1	0	3	200.0%
	Asian	4	3	7	3	10	150.0%
	Hispanic	17	15	13	6	14	-17.6%
	White, Non Hispanic	264	220	200	221	265	0.4%
	Unknown	208	192	237	206	131	-37.0%
	Two or More Races	0	15	15	9	21	
	Hawaiian or Pacific Islander	0	3	2	2	4	
<b>Total Male</b>		<b>1,218</b>	<b>1,169</b>	<b>1,091</b>	<b>1,043</b>	<b>1,040</b>	<b>-14.6%</b>

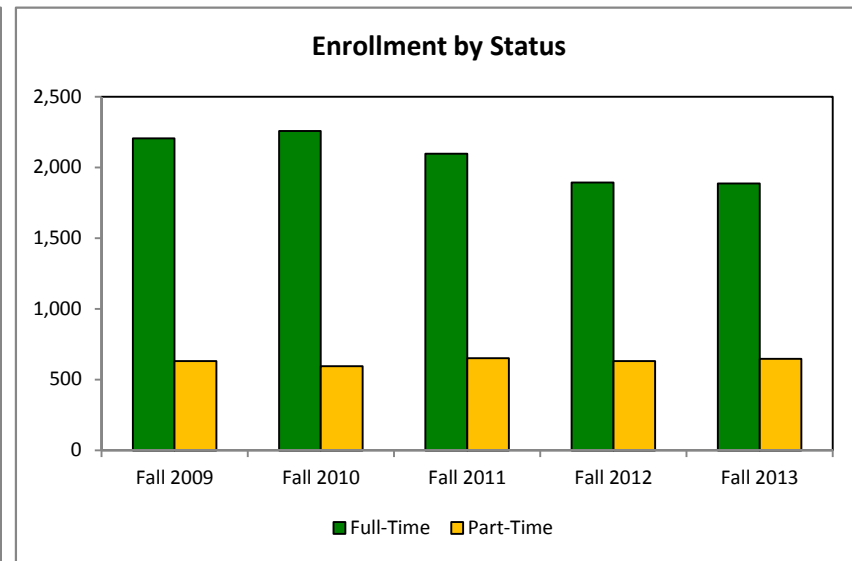
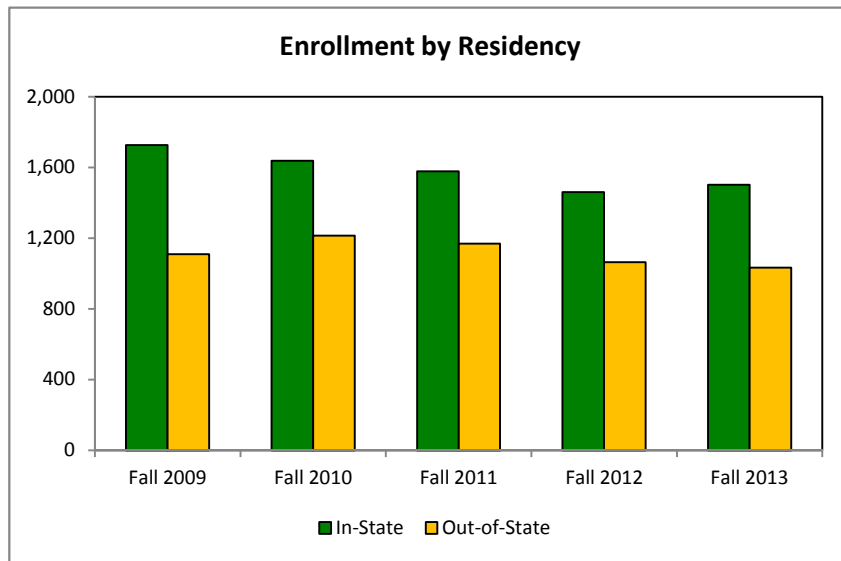
**Total Enrollment by Gender and Race**

Gender	Race	Fall 2009	Fall 2010	Fall 2011	Fall 2012	Fall 2013	5-Yr Change
Total	Nonresident Alien	39	63	63	66	13	-66.7%
	Black, Non Hispanic	1,620	1,651	1,479	1,327	1,412	-12.8%
	American Indian/Alaskan Native	4	3	5	0	6	50.0%
	Asian	12	7	9	10	22	83.3%
	Hispanic	37	31	32	26	37	0.0%
	White, Non Hispanic	701	633	580	592	667	-4.9%
	Unknown	421	421	545	474	318	-24.5%
	Two or More Races	0	39	29	23	51	
	Hawaiian or Pacific Islander	0	3	4	6	7	
<b>Total Enrollment</b>		<b>2,834</b>	<b>2,851</b>	<b>2,746</b>	<b>2,524</b>	<b>2,533</b>	<b>-10.6%</b>



**Total Enrollment by Residency and Status**

Residency	Status	Fall 2009	Fall 2010	Fall 2011	Fall 2012	Fall 2013	5-Yr Change
In-State	Full-Time	1,157	1,137	1,034	934	922	-20.3%
	Part-Time	569	501	543	526	579	1.8%
	<b>Total In-State</b>	<b>1,726</b>	<b>1,638</b>	<b>1,577</b>	<b>1,460</b>	<b>1,501</b>	<b>-13.0%</b>
Out-of-State	Full-Time	1,047	1,119	1,062	959	965	-7.8%
	Part-Time	61	94	107	105	67	9.8%
	<b>Total Out-of-State</b>	<b>1,108</b>	<b>1,213</b>	<b>1,169</b>	<b>1,064</b>	<b>1,032</b>	<b>-6.9%</b>
Total	Full-Time	2,204	2,256	2,096	1,893	1,887	-14.4%
	Part-Time	630	595	650	631	646	2.5%
	<b>Total Enrollment</b>	<b>2,834</b>	<b>2,851</b>	<b>2,746</b>	<b>2,524</b>	<b>2,533</b>	<b>-10.6%</b>



**Full-Time Equivalent (FTE)**

There are several different techniques used to calculate the Full-Time Equivalent (FTE). Kentucky Council on Postsecondary Education (CPE) has been using the formula (1) in the past, but since Fall 2010 CPE started using the new formula (2). Combining the enrollment number with credit hours, formula (3) is used to illustrate the actual FTE, while the Federal IPEDS uses different technique as describe in formula (4).

**(1) CPE old formula**

FTE = Full-Time enrollment + 1/3 Part-Time enrollment

		Fall 2009	Fall 2010	Fall 2011	Fall 2012	Fall 2013	5-Yr Change
Undergraduate	Full-Time Headcount	2,106	2,133	1,979	1,782	1,813	
	Part-Time Headcount	532	473	511	514	557	
	Undergraduate FTE	2,284	2,291	2,150	1,954	1,999	-12.5%
Graduate	Full-Time Headcount	98	123	117	111	74	
	Part-Time Headcount	98	122	139	117	89	
	Graduate FTE	131	164	164	150	104	-20.6%
Total	Full-Time Headcount	2,204	2,256	2,096	1,893	1,887	
	Part-Time Headcount	630	595	650	631	646	
	Total FTE	2,414	2,455	2,313	2,104	2,103	-12.9%

**(2) CPE new formula**

FTE = (undergraduate student credit hours/15) + (graduate student credit hours/12)

		Fall 2009	Fall 2010	Fall 2011	Fall 2012	Fall 2013	5-Yr Change
Undergraduate	Student Credit Hours	32,389	32,907	30,478	27,941	29,036	
	Undergraduate FTE	2,159	2,194	2,032	1,863	1,936	-10.4%
Graduate	Student Credit Hours	1,466	1,847	1,862	1,676	1,164	
	Graduate FTE	122	154	155	140	97	-20.6%
Total	Student Credit Hours	33,855	34,754	32,340	29,617	30,200	
	Total FTE	2,281	2,348	2,187	2,002	2,033	-10.9%

**Full-Time Equivalent (FTE)**

(3) Actual FTE formula  $FTE = \text{Full-Time enrollment} + (\text{undergraduate part-time credit hours}/12) + (\text{graduate part-time credit hours}/9)$

		Fall 2009	Fall 2010	Fall 2011	Fall 2012	Fall 2013	5-Yr Change
Undergraduate	Full-Time Headcount	2,106	2,133	1,979	1,782	1,813	
	Part-Time Credit Hours	2,810	2,881	2,933	2,748	3,021	
	Undergraduate FTE	2,340	2,373	2,223	2,011	2,065	-11.8%
Graduate	Full-Time Headcount	98	123	117	111	74	
	Part-Time Credit Hours	489	617	724	614	452	
	Graduate FTE	152	192	197	179	124	-18.5%
Total	Full-Time Headcount	2,204	2,256	2,096	1,893	1,887	
	Part-Time Proportion	288	309	325	297	302	
	Total FTE	2,492	2,565	2,421	2,190	2,189	-12.2%

(4) Federal IPEDS FTE formula

$FTE = \text{Undergraduate Full-Time Enrollment} + 0.403543 \text{ Undergraduate Part-Time Enrollment} + \text{Graduate Full-Time Enrollment} + 0.361702 \text{ Graduate Part-Time Enrollment}$

		Fall 2009	Fall 2010	Fall 2011	Fall 2012	Fall 2013	5-Yr Change
Undergraduate	Full-Time Headcount	2,106	2,133	1,979	1,782	1,813	
	Part-Time Headcount	532	473	511	514	557	
	Undergraduate FTE	2,321	2,324	2,186	1,990	2,038	-12.2%
Graduate	Full-Time Headcount	98	123	117	111	74	
	Part-Time Headcount	98	122	139	117	89	
	Graduate FTE	134	168	168	154	107	-20.1%
Total	Full-Time Headcount	2,204	2,256	2,096	1,893	1,887	
	Part-Time Headcount	630	595	650	631	646	
	Total FTE	2,455	2,492	2,353	2,143	2,144	-12.7%